

Baritone (B.C.)

# The Ohio State University Marching Band School Songs

## Buckeye Fanfare

Manley Whitcomb  
Perc. by Gary Hodges

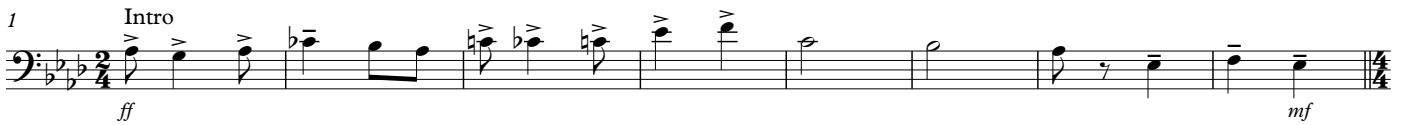
♩ = 100



## Buckeye Battle Cry

arr. R. Heine (1969)

♩ = 180



# Fanfare for a New Era

Baritone (B.C.)

*Dedicated to Head Coach Jim Tressel, along with his staff and players, on the occasion of their inaugural season in the newly renovated Ohio Stadium, September 8, 2001.*

James Swearingen  
Perc. by Jeremy Bradstreet

**With Drive and Intensity!**

1  $\text{♩} = 148$

2

9 **9**

17 **17** **Very stately (without slowing)** **Marcato**

22 **22**

*f* *sf* *sf* *ff* *sfz* *ff*

## Fight the Team (Across the Field) with OHIO tag

arr. R. Heine (1972)  
Tag - J. Swearingen (2012)

$\text{♩} = 180$

1 **Chorus**

9 *ff*

17 **17**

25 **Fine** **To Coda for TAG**

33 **33** **Break**

39 **D.C. al Fine**

**OHIO Tag**

45 O H I O **49**

53 **Gradually Broaden** *f*  $\text{♩} = 100$  *fz*

59 **molto rall.**

# Le Regiment de Sambre et Meuse

arr. R. Heine (1964/1976)

1  $\text{♩} = 136$  3

8

17 17

25

33 33

42

Repeat for  
Double Script ONLY

50 51

63 67

73

82 83

To Coda 2x for Single/Double Script  
To Coda 1x for Short with Singing

92

Repeat for  
Double Script ONLY

98 100

107

117

$\oplus$  Coda

126 **D.C. al Coda** **Faster** **to Buckeye**

# The Star-Spangled Banner

arr. R. Heine (1971)

1

10

18

Detailed description: This block contains the musical score for 'The Star-Spangled Banner' for Baritone (B.C.). It consists of three staves of music. The first staff starts with a treble clef, a key signature of three flats (B-flat, E-flat, A-flat), and a 3/4 time signature. It begins with a whole note chord, followed by a series of quarter and eighth notes. A first ending bracket is shown above the final two measures. The second staff starts at measure 10 and continues the melody with various note values and rests. The third staff starts at measure 18 and concludes the piece with a final chord and a fermata.

# Chimes/Carmen Ohio

arr. R. Heine/J. Evans 1955/1970

Chimes  
♩ = 60

1

8

12

20

12

20

rit.

Detailed description: This block contains the musical score for 'Chimes/Carmen Ohio'. It features three staves. The first staff is for 'Chimes' and is written in a 3/2 time signature with a tempo marking of ♩ = 60. It consists of a single long note with a fermata, marked with a forte dynamic (sfz). The second staff, starting at measure 12, is for 'Carmen Ohio' and is in a 4/4 time signature. It features a melody of quarter notes with a fermata at the end. The third staff, starting at measure 20, continues the 'Carmen Ohio' melody with a 'rit.' (ritardando) marking and a final fermata.

# Hang On, Sloopy!

arr. J. Tatgenhorst (1964)

1

♩ = 132

5

9

17

25

30

*f*

*mp*

*fff*

*sim.*

*sim.*

Yeah!

Detailed description: This block contains the musical score for 'Hang On, Sloopy!'. It consists of five staves of music. The first staff starts with a treble clef, a key signature of one flat (B-flat), and a 4/4 time signature with a tempo marking of ♩ = 132. It begins with a rest, followed by a melody of eighth notes with accents, marked with a forte dynamic (f). A first ending bracket is shown above measures 5-8. The second staff starts at measure 9 and continues the melody with a mezzo-piano dynamic (mp). The third staff starts at measure 17 and continues the melody with a fortissimo dynamic (fff). The fourth staff starts at measure 25 and continues the melody with a 'sim.' (sostenuto) marking. The fifth staff starts at measure 30 and concludes the piece with a final melody and a 'Yeah!' instruction.

# I Wanna Go Back to Ohio State

arr. R. Heine (1959)

1  $\text{♩} = 120$   
*f*

9 9  
*mf* *ff*

16

23 25

33 33

41 41

49 49

55 **Playing Ending**  
*ff*

61 **Singing Ending** *rit.*  
*ff* *fz*

# Down By the O-HI-O

Ohio, Omyo

arr. R. Heine

1 **Fanfare - Bright 2** (♩ = 120) 5

12 **Taps** 15 **Slow 4** (♩ = 100) 2 **Taps**

22 **Medium 2** (♩ = 120) 22 **March**

32 33 40

44 **Legato Jazz Style** (♩ = 120)

52 3

# OSUMBlus

(Four to Go)

R. Heine (1959)

1 **Legato Medium Swing** (♩ = 152) 2 2

11 13

19

25 25 mf cresc.

31 ff

37 37

44 fz fff

# The Navy Hymn (Skull Session Version)

7  
John Dykes  
arr. Ken McCoy (1997)  
Perc. by J. Moore

1 Reverently ♩ = 72

Musical notation for the first staff of 'The Navy Hymn'. It begins with a bass clef and a key signature of two flats. The tempo is marked as ♩ = 72. The dynamics are *mf* and *cresc.*. The staff contains several measures of music, ending with a double bar line and a '2' indicating a second ending.

13 **13** VOCAL SCORE

Musical notation for the second staff of 'The Navy Hymn', labeled 'VOCAL SCORE'. It features a bass clef and a key signature of two flats. The staff is divided into three measures, each with a different time signature: 3/4, 4/4, and 5/4. The measures contain rests.

27 Tenor Drum  
Entrance

Musical notation for the third staff of 'The Navy Hymn', labeled 'Tenor Drum Entrance'. It begins with a bass clef and a key signature of two flats. The dynamics are *ff* and *p*. The staff contains several measures of music, including a measure marked with a circled '44'.

49 **49**

Musical notation for the fourth staff of 'The Navy Hymn'. It begins with a bass clef and a key signature of two flats. The dynamics are *cresc.* and *f*. The staff contains several measures of music.

59

Musical notation for the fifth staff of 'The Navy Hymn'. It begins with a bass clef and a key signature of two flats. The dynamics are *cresc.*, *ff*, and *sfz > mp*. The staff contains several measures of music, including a measure marked with a circled '63'.

## Beautiful Ohio

arr. R. Heine

1 Fanfare

Musical notation for the first staff of 'Beautiful Ohio', labeled 'Fanfare'. It begins with a bass clef and a key signature of two flats. The time signature is 2/4. The dynamics are *ff*. The staff contains several measures of music.

13 **13** March (♩ = 120)

Musical notation for the second staff of 'Beautiful Ohio', labeled 'March'. It begins with a bass clef and a key signature of two flats. The tempo is marked as ♩ = 120. The staff contains several measures of music.

24

Musical notation for the third staff of 'Beautiful Ohio'. It begins with a bass clef and a key signature of two flats. The dynamics are *ff*. The staff contains several measures of music, including a measure marked with a circled '29' and the text 'Optional cut to 61'.

35

Musical notation for the fourth staff of 'Beautiful Ohio'. It begins with a bass clef and a key signature of two flats. The staff contains several measures of music.

45 **45**

Musical notation for the fifth staff of 'Beautiful Ohio'. It begins with a bass clef and a key signature of two flats. The staff contains several measures of music.

56

Musical notation for the sixth staff of 'Beautiful Ohio'. It begins with a bass clef and a key signature of two flats. The staff contains several measures of music, including a measure marked with a circled '61'.

67

Musical notation for the seventh staff of 'Beautiful Ohio'. It begins with a bass clef and a key signature of two flats. The staff contains several measures of music.